

• TULEX HEAVY DUTY IMPACT HEX SOCKETS (6 POINT) :

These sockets are designed to be used with pneumatic/electric impact wrenches and nut runners. They have single hex broaching for good grip on nuts & bolts to avoid tools slipping during high speed tightening operations. Its extra wall thickness together with special steel and heat treatment process helps absorb shock transmitted to sockets while in use with impact wrenches. They have conventional locking arrangement i.e. lock button or snap ring fitted on the male square drives. They can also be provided with two cross holes and groove for locking onto the impact wrench using 'O' ring and pin arrangement. These are available in 1/4", 3/8", 1/2", 3/4", 1", 1.1/2", 2.1/2", 3.1/2" square drives to cover nut across flat sizes 6 mm to 235 mm and 1/4" to 9.1/8" in standard lengths and deep lengths. These are ideal for operating with hydraulic wrenches and most suitable for use in automobile industry. All impact sockets are made from high strength alloy steel. These are heat treated for the best combination of strength and impact resistance. All impact sockets have an optimum wall thickness for strength and access on fasteners having restrictions. All impact socket have a ring and pin arrangement for securing them to the drive. The impact sockets are plated and black oxidized coated for increased protection against rusting. It can be manufactured with chamfered openings for ease in engagement with the drive tool and the fastener against specific requests. *Note:* Locking ring & Pin are not included with the grooved impact sockets. These are available on request.



SHORT					DEEP	
PART NO.	ACROSS FLATS	DIA AT SOCKET END	DIA AT DRIVE END	OVERALL LENGTH	PART NO.	OVERALL LENGTH
TUM-6AI	6	11.0	14.0	22	TUM-6ADI	45
TUM-7AI	7	12.0	14.0	22	TUM-7ADI	45
TUM-8AI	8	13.0	14.0	22	TUM-8ADI	45
TUM-9AI	9	14.0	14.0	22	TUM-9ADI	45
TUM-10AI	10	16.0	16.0	22	TUM-10ADI	45
TUM-11AI	11	17.0	16.0	22	TUM-11ADI	45
TUM-12AI	12	18.5	16.0	22	TUM-12ADI	45
TUM-13AI	13	19.5	16.0	22	TUM-13ADI	45
TUM-14AI	14	21.5	16.0	22	TUM-14ADI	45

1/4" 6.35 mm
Metric mm sizes

SHORT					DEEP	
PART NO.	ACROSS FLATS	DIA AT SOCKET END	DIA AT DRIVE END	OVERALL LENGTH	PART NO.	OVERALL LENGTH
TU-14AI	1/4"	11.0	14.0	22	TUM-14ADI	45
TU-15AI	9/32"	12.0	14.0	22	TUM-15ADI	45
TU-16AI	5/16"	13.0	14.0	22	TUM-16ADI	45
TU-17AI	11/32"	14.0	14.0	22	TUM-17ADI	45
TU-18AI	3/8"	15.0	14.0	22	TUM-18ADI	45
TU-19AI	7/16"	17.0	16.0	22	TUM-19ADI	45
TU-20AI	1/2"	19.0	16.0	22	TUM-20ADI	45
TU-21AI	9/16"	21.0	16.0	22	TUM-21ADI	45

1/4" 6.35 mm
American inch sizes

SHORT					DEEP	
PART NO.	ACROSS FLATS	DIA AT SOCKET END	DIA AT DRIVE END	OVERALL LENGTH	PART NO.	OVERALL LENGTH
TUM-7BI	7	13.0	19.0	30	TUM-7BDI	54
TUM-8BI	8	14.0	19.0	30	TUM-8BDI	54
TUM-9BI	9	15.5	19.0	30	TUM-9BDI	54
TUM-10BI	10	17.0	19.0	30	TUM-10BDI	54
TUM-11BI	11	18.0	21.0	30	TUM-11BDI	54
TUM-12BI	12	20.0	21.0	30	TUM-12BDI	54
TUM-13BI	13	21.0	21.0	30	TUM-13BDI	54
TUM-14BI	14	22.0	22.0	30	TUM-14BDI	54
TUM-15BI	15	23.5	22.0	30	TUM-15BDI	54
TUM-16BI	16	24.5	22.0	30	TUM-16BDI	54
TUM-17BI	17	25.5	22.0	30	TUM-17BDI	54
TUM-18BI	18	27.0	22.0	30	TUM-18BDI	54
TUM-19BI	19	27.5	22.0	30	TUM-19BDI	54

3/8" 9.35 mm
Metric mm sizes

SHORT					DEEP	
PART NO.	ACROSS FLATS	DIA AT SOCKET END	DIA AT DRIVE END	OVERALL LENGTH	PART NO.	OVERALL LENGTH
TU-16BI	5/16"	14.0	19.0	30	TU-16BDI	54
TU-18BI	3/8"	15.0	19.0	30	TU-18BDI	54
TU-19BI	7/16"	17.5	19.0	30	TU-19BDI	54
TU-20BI	1/2"	20.0	20.0	30	TU-20BDI	54
TU-22BI	9/16"	22.0	22.0	30	TU-22BDI	54
TU-23BI	5/8"	24.5	22.0	30	TU-23BDI	54
TU-24BI	11/8"	25.5	22.0	30	TU-24BDI	54
TU-25BI	3/4"	27.5	22.0	30	TU-25BDI	54

3/8" 9.35 mm
American inch sizes

SHORT					DEEP	
PART NO.	ACROSS FLATS	DIA AT SOCKET END	DIA AT DRIVE END	OVERALL LENGTH	PART NO.	OVERALL LENGTH
TUM-8CI	8	16.0	26.0	38	TUM-8CDI	60
TUM-9CI	9	16.5	26.0	38	TUM-9CDI	60
TUM-10CI	10	18.5	26.0	38	TUM-10CDI	80
TUM-11CI	11	20.0	26.0	38	TUM-11CDI	80
TUM-12CI	12	20.5	26.0	38	TUM-12CDI	80
TUM-13CI	13	22.5	26.0	38	TUM-13CDI	80
TUM-14CI	14	24.0	26.0	38	TUM-14CDI	80
TUM-15CI	15	25.0	26.0	38	TUM-15CDI	80
TUM-16CI	16	26.0	26.0	38	TUM-16CDI	80
TUM-17CI	17	27.5	26.0	38	TUM-17CDI	80
TUM-18CI	18	28.5	26.0	38	TUM-18CDI	80
TUM-19CI	19	29.5	28.0	38	TUM-19CDI	80
TUM-20CI	20	31.0	28.0	38	TUM-20CDI	80
TUM-21CI	21	31.5	28.0	38	TUM-21CDI	80
TUM-22CI	22	34.0	30.0	38	TUM-22CDI	80
TUM-23CI	23	35.0	30.0	38	TUM-23CDI	80
TUM-24CI	24	35.5	30.0	38	TUM-24CDI	80
TUM-25CI	25	37.0	30.0	38	TUM-25CDI	80
TUM-26CI	26	38.5	30.0	38	TUM-26CDI	80
TUM-27CI	27	39.5	30.0	38	TUM-27CDI	80
TUM-28CI	28	41.0	30.0	42	TUM-28CDI	80
TUM-29CI	29	43.0	30.0	42	TUM-29CDI	80
TUM-30CI	30	44.0	30.0	45	TUM-30CDI	80
TUM-32CI	32	47.0	30.0	45	TUM-32CDI	80

1/2" 12.7 mm
Metric mm sizes

SHORT					DEEP	
PART NO.	ACROSS FLATS	DIA AT SOCKET END	DIA AT DRIVE END	OVERALL LENGTH	PART NO.	OVERALL LENGTH
TU-16CI	5/16"	16.0	26.0	38	TU-16CDI	60
TU-18CI	3/8"	16.5	26.0	38	TU-18CDI	80
TU-19CI	7/16"	18.0	26.0	38	TU-19CDI	80
TU-20CI	1/2"	20.5	26.0	38	TU-20CDI	80
TU-21CI	9/16"	22.5	26.0	38	TU-21CDI	80
TU-23CI	5/8"	25.0	26.0	38	TU-23CDI	80
TU-24CI	11/16"	27.5	26.0	38	TU-24CDI	80
TU-25CI	3/4"	29.5	28.0	38	TU-25CDI	80
TU-27CI	13/16"	31.5	28.0	38	TU-27CDI	80
TU-28CI	7/8"	34.0	30.0	38	TU-28CDI	80
TU-29CI	15/16"	35.1	30.0	38	TU-29CDI	80
TU-30CI	1"	37.5	30.0	38	TU-30CDI	80
TU-31CI	1.1/16"	39.5	30.0	38	TU-31CDI	80
TU-32CI	1.1/8"	43.0	30.0	42	TU-32CDI	80
TU-33CI	1.3/16"	44.5	30.0	45	TU-33CDI	80
TU-34CI	1.1/4"	47.0	30.0	45	TU-34CDI	80
TU-35CI	1.3/8"	54.0	30.0	50	TU-36CDI	90
TU-38CI	1.1/2"	58.0	30.0	50	TU-38CDI	90

1/2" 12.7 mm
American inch sizes

SHORT					DEEP	
PART NO.	ACROSS FLATS	DIA AT SOCKET END	DIA AT DRIVE END	OVERALL LENGTH	PART NO.	OVERALL LENGTH
TUM-17DI	17	32.5	43.0	44	TUM-17DDI	75
TUM-18DI	18	33.5	43.0	44	TUM-18DDI	75
TUM-19DI	19	35.0	43.0	44	TUM-19DDI	75
TUM-21DI	21	37.0	43.0	48	TUM-21DDI	75
TUM-22DI	22	38.5	43.0	48	TUM-22DDI	75
TUM-24DI	24	40.0	43.0	48	TUM-24DDI	75
TUM-27DI	27	44.5	43.0	50	TUM-27DDI	75
TUM-30DI	30	49.0	45.0	50	TUM-30DDI	80
TUM-32DI	32	51.5	45.0	52	TUM-32DDI	85
TUM-33DI	33	53.0	45.0	52	TUM-33DDI	85
TUM-34DI	34	54.0	45.0	52	TUM-34DDI	85
TUM-36DI	36	55.5	45.0	54	TUM-36DDI	90
TUM-38DI	38	58.5	45.0	57	TUM-38DDI	90
TUM-41DI	41	63.0	45.0	57	TUM-41DDI	95
TUM-46DI	46	69.0	48.0	60	TUM-46DDI	95
TUM-50DI	50	74.0	48.0	63	TUM-50DDI	95
TUM-55DI	55	79.5	48.0	69	TUM-55DDI	110
TUM-60DI	60	84.5	48.0	76	TUM-60DDI	110

3/4" 19 mm
Metric mm sizes

SHORT					DEEP	
PART NO.	ACROSS FLATS	DIA AT SOCKET END	DIA AT DRIVE END	OVERALL LENGTH	PART NO.	OVERALL LENGTH
TU-21DI	9/16"	27.5	43.0	44	TUM-21DDI	75
TU-23DI	5/8"	30.5	43.0	44	TUM-23DDI	75
TU-24DI	11/16"	31.5	43.0	44	TUM-24DDI	75
TU-25DI	3/4"	34.5	43.0	44	TUM-25DDI	75
TU-27DI	13/16"	35.5	43.0	48	TUM-27DDI	75
TU-28DI	7/8"	39.0	43.0	48	TUM-28DDI	75
TU-29DI	15/16"	41.0	43.0	48	TUM-29DDI	75
TU-30DI	1"	43.0	43.0	48	TUM-30DDI	75
TU-31DI	1.1/16"	44.5	43.0	50	TUM-31DDI	75
TU-32DI	1.1/8"	46.0	45.0	50	TUM-32DDI	75
TU-34DI	1.1/4"	51.0	45.0	52	TUM-34DDI	85
TU-35DI	1.5/16"	52.0	45.0	52	TUM-35DDI	85
TU-36DI	1.3/8"	54.5	45.0	54	TUM-36DDI	85
TU-37DI	1.7/16"	55.5	45.0	54	TUM-37DDI	90
TU-38DI	1.1/2"	58.5	48.0	57	TUM-38DDI	90
TU-39DI	1.5/8"	63.0	48.0	57	TUM-39DDI	95
TU-40DI	1.11/16"	64.5	48.0	65	TUM-40DDI	95
TU-42DI	1.13/16"	68.0	60.0	68	TUM-41DDI	95
TU-43DI	1.7/8"	69.5	60.0	68	TUM-42DDI	95
TU-44DI	1.15/16"	74.0	60.0	70	TUM-43DDI	95
TU-45DI	2"	74.5	60.0	70	TUM-44DDI	95
TU-46DI	2.1/16"	79.5	60.0	74	TUM-45DDI	110
TU-47DI	23/16"	82.0	70.0	74	TUM-46DDI	110
TU-48DI	2.1/4"	84.5	70.0	74	TUM-47DDI	120
TU-50DI	2.3/8"	89.0	70.0	78	TUM-48DDI	120

3/4" 19 mm
American inch sizes

SHORT

PART NO.	SHORT			DEEP		
	ACROSS FLATS	DIA AT SOCKET END	DIA AT DRIVE END	OVERALL LENGTH	PART NO.	OVERALL LENGTH
TUM-19EI	19	37.5	54.0	54	TUM-19EDI	80
TUM-22EI	22	42.0	54.0	54	TUM-22EDI	80
TUM-24EI	24	44.5	54.0	54	TUM-24EDI	80
TUM-27EI	27	49.0	54.0	56	TUM-27EDI	80
TUM-30EI	30	53.0	54.0	56	TUM-30EDI	85
TUM-32EI	32	54.0	54.0	58	TUM-32EDI	85
TUM-33EI	33	55.5	54.0	58	TUM-33EDI	85
TUM-34EI	34	57.0	54.0	58	TUM-34EDI	90
TUM-36EI	36	59.0	54.0	60	TUM-36EDI	90
TUM-38EI	38	62.0	58.0	62	TUM-38EDI	90
TUM-41EI	41	64.5	58.0	62	TUM-41EDI	90
TUM-46EI	46	72.0	58.0	67	TUM-46EDI	100
TUM-50EI	50	77.0	58.0	68	TUM-50EDI	100
TUM-55EI	55	84.0	58.0	73	TUM-55EDI	110
TUM-60EI	60	89.0	58.0	80	TUM-60EDI	120
TUM-65EI	65	97.0	58.0	83	TUM-65EDI	120
TUM-70EI	70	104.0	58.0	86	TUM-70EDI	130
TUM-75EI	75	108.0	58.0	96	TUM-75EDI	130
TUM-80EI	80	114.0	58.0	100	TUM-80EDI	140
TUM-85EI	85	119.0	58.0	100	TUM-85EDI	140

1" 25.4 mm
Metric mm sizes

SHORT

PART NO.	SHORT			DEEP		
	ACROSS FLATS	DIA AT SOCKET END	DIA AT DRIVE END	OVERALL LENGTH	PART NO.	OVERALL LENGTH
TUM-36FI	36	65.0	86.0	80	TUM-36FDI	105
TUM-38FI	38	67.0	86.0	80	TUM-38FDI	105
TUM-41FI	41	71.0	86.0	83	TUM-41FDI	105
TUM-46FI	46	78.0	86.0	86	TUM-46FDI	115
TUM-50FI	50	83.0	86.0	90	TUM-50FDI	115
TUM-55FI	55	89.0	86.0	95	TUM-55FDI	130
TUM-60FI	60	96.0	86.0	98	TUM-60FDI	130
TUM-65FI	65	99.5	86.0	102	TUM-65FDI	135
TUM-70FI	70	108.0	86.0	102	TUM-70FDI	140
TUM-75FI	75	114.0	86.0	108	TUM-75FDI	145
TUM-80FI	80	119.0	86.0	110	TUM-80FDI	150
TUM-85FI	85	128.0	86.0	115	TUM-85FDI	155
TUM-90FI	90	134.0	86.0	118	TUM-90FDI	160
TUM-95FI	95	139.0	125.0	123	TUM-95FDI	170
TUM-96FI	100	146.0	125.0	128	TUM-100FDI	180
TUM-105FI	105	154.0	125.0	132	TUM-105FDI	190
TUM-110FI	110	159.0	125.0	138	TUM-110FDI	195
TUM-115FI	115	164.0	125.0	143	TUM-115FDI	195
TUM-120FI	120	174.0	125.0	148	TUM-120FDI	200

1.12" 38.1 mm
Metric mm sizes

PART NO.	ACROSS FLATS	DIA AT SOCKET END	DIA AT DRIVE END	OVERALL LENGTH
TUM-60GI	60	105.0	122.0	140
TUM-65GI	65	105.0	122.0	140
TUM-70GI	70	117.0	122.0	145
TUM-75GI	75	117.0	122.0	145
TUM-80GI	80	127.0	127.0	145
TUM-85GI	85	127.0	127.0	145
TUM-90GI	90	140.0	127.0	160
TUM-95GI	95	140.0	127.0	160
TUM-100GI	100	155.0	127.0	160
TUM-105GI	105	155.0	127.0	160
TUM-115GI	115	175.0	127.0	170
TUM-120GI	120	175.0	127.0	170
TUM-130GI	130	190.0	152.0	190
TUM-135GI	135	190.0	152.0	190
TUM-145GI	145	210.0	152.0	195
TUM-150GI	150	210.0	152.0	195
TUM-155GI	155	220.0	152.0	200
TUM-160GI	160	220.0	152.0	200

2.12" 63.5 mm
Metric mm sizes

SHORT

PART NO.	SHORT			DEEP		
	ACROSS FLATS	DIA AT SOCKET END	DIA AT DRIVE END	OVERALL LENGTH	PART NO.	OVERALL LENGTH
TU-25EI	3/4"	37.0	54.0	54	TU-25EDI	70
TU-27EI	13/16"	39.0	54.0	54	TU-27EDI	80
TU-28EI	7/8"	41.0	54.0	54	TU-28EDI	80
TU-29EI	15/16"	43.0	54.0	54	TU-29EDI	80
TU-30EI	1"	45.0	54.0	56	TU-30EDI	80
TU-31EI	1.1/16"	47.0	54.0	56	TU-31EDI	80
TU-32EI	1.1/8"	49.0	54.0	56	TU-32EDI	80
TU-34EI	1.1/4"	53.0	54.0	58	TU-34EDI	85
TU-35EI	1.5/16"	54.0	54.0	58	TU-35EDI	85
TU-36EI	1.3/8"	56.7	54.0	58	TU-36EDI	90
TU-37EI	1.7/16"	60.5	54.0	60	TU-37EDI	90
TU-38EI	1.1/2"	64.0	58.0	62	TU-38EDI	90
TU-39EI	1.5/8"	66.0	58.0	62	TU-39EDI	90
TU-40EI	1.11/16"	70.0	58.0	65	TU-40EDI	95
TU-41EI	1.3/4"	72.0	58.0	65	TU-41EDI	95
TU-42EI	1.13/16"	74.0	58.0	67	TU-42EDI	100
TU-43EI	1.7/8"	76.0	58.0	68	TU-43EDI	100
TU-44EI	1.15/16"	77.0	58.0	68	TU-44EDI	100
TU-45EI	2"	80.0	58.0	70	TU-45EDI	100
TU-46EI	2.1/16"	82.0	58.0	72	TU-46EDI	110
TU-47EI	2.3/16"	86.0	58.0	73	TU-47EDI	120
TU-48EI	2.1/4"	90.0	58.0	77	TU-48EDI	120
TU-50EI	2.3/8"	94.0	58.0	80	TU-50EDI	120
TU-51EI	2.7/16"	95.0	58.0	80	TU-51EDI	120
TU-53EI	2.9/16"	100.0	58.0	83	TU-53EDI	120
TU-54EI	2.5/8"	102.0	58.0	83	TU-54EDI	120
TU-56EI	2.3/4"	108.0	58.0	86	TU-56EDI	130
TU-57EI	2.13/16"	108.0	58.0	90	TU-57EDI	130
TU-59EI	2.15/16"	112.0	58.0	95	TU-59EDI	130
TU-60EI	3"	118.0	58.0	95	TU-60EDI	130
TU-61EI	3.1/8"	118.0	58.0	100	TU-61EDI	140
TU-63EI	3.3/8"	122.0	58.0	100	TU-63EDI	140
TUM-63.5EI	3.1/2"	122.0	58.0	100	TU-64EDI	140

1" 25.4 mm
American inch sizes

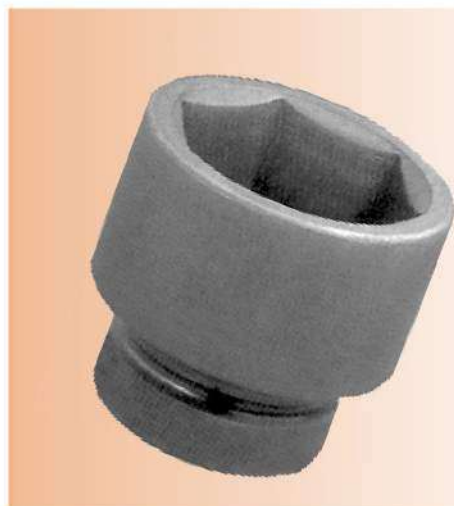
SHORT

PART NO.	SHORT			DEEP		
	ACROSS FLATS	DIA AT SOCKET END	DIA AT DRIVE END	OVERALL LENGTH	PART NO.	OVERALL LENGTH
TU-31FI	1.1/16"	54.0	86.0	80	TU-31FDI	105
TU-32FI	1.1/8"	58.0	86.0	80	TU-32FDI	105
TU-36FI	1.3/8"	64.0	86.0	80	TU-36FDI	105
TU-37FI	1.7/16"	64.0	86.0	80	TU-37FDI	105
TU-38FI	1.1/2"	66.0	86.0	80	TU-38FDI	105
TU-38.5FI	1.9/16"	69.0	86.0	86	TU-38.5FDI	105
TU-39FI	1.5/8"	69.0	86.0	86	TU-40FDI	110
TU-41FI	1.3/4"	76.0	86.0	86	TU-41FDI	110
TU-42FI	1.13/16"	76.0	86.0	86	TU-42FDI	115
TU-43FI	1.7/8"	76.0	86.0	86	TU-43FDI	115
TU-45FI	2"	81.0	86.0	90	TU-45FDI	115
TU-46FI	2.1/16"	86.0	86.0	90	TU-46FDI	125
TU-47FI	2.3/16"	88.0	86.0	95	TU-47FDI	130
TU-48FI	2.1/4"	88.0	86.0	95	TU-48FDI	130
TU-50FI	2.3/8"	94.0	86.0	98	TU-50FDI	130
TU-51FI	2.7/16"	94.0	86.0	98	TU-51FDI	130
TU-53FI	2.9/16"	99.0	86.0	102	TU-53FDI	135
TU-54FI	2.5/8"	99.0	86.0	102	TU-54FDI	140
TU-56DI	2.3/4"	106.0	86.0	102	TU-56FDI	140
TU-57FI	2.13/16"	106.0	86.0	102	TU-57FDI	140
TU-59FI	2.15/16"	112.0	86.0	108	TU-59FDI	145
TU-60FI	3"	112.0	86.0	108	TU-60FDI	150
TU-61FI	3.1/8"	118.0	86.0	110	TU-61FDI	150
TU-63FI	3.3/8"	118.0	86.0	110	TU-63FDI	155
TU-64FI	3.1/2"	131.0	86.0	118	TU-64FDI	160
TU-65FI	3.3/4"	131.0	86.0	118	TU-65FDI	170
TU-66FI	3.7/8"	131.0	86.0	118	TU-66FDI	170
TU-68FI	4.1/8"	150.0	125.0	132	TU-68FDI	185
TU-69FI	4.1/4"	150.0	125.0	132	TU-69FDI	190
TU-70FI	4.1/2"	162.0	125.0	143	TU-70FDI	195
TU-71FI	4.5/8"	162.0	125.0	143	TU-71FDI	200

1.12" 38.1 mm
American inch sizes

PART NO.	ACROSS FLATS	DIA AT SOCKET END	DIA AT DRIVE END	OVERALL LENGTH
TU-48.5GI	2.1/8"	105.0	122.0	140
TU-48GI	2.1/4"	105.0	122.0	140
TU-51GI	2.7/16"	105.0	122.0	140
TU-53GI	2.9/16"	105.0	122.0	140
TU-54GI	2.5/8"	117.0	122.0	145
TU-56GI	2.3/4"	117.0	122.0	145
TU-57GI	2.13/16"	117.0	122.0	145
TU-59GI	2.15/16"	117.0	122.0	145
TU-60GI	3"	127.0	127.0	145
TU-61GI	3.1/8"	127.0	127.0	145
TU-63GI	3.3/8"	127.0	127.0	145
TU-64GI	3.1/2"	140.0	127.0	160
TU-65GI	3.3/4"	140.0	127.0	160
TU-66GI	3.7/8"	140.0	127.0	160
TU-68GI	4.1/8"	155.0	127.0	160
TU-69GI	4.1/4"	160.0	127.0	170
TU-70GI	4.1/2"	175.0	127.0	170
TU-71GI	4.5/8"	175.0	127.0	170
TU-72GI	4.7/8"	190.0	152.0	190
TU-73GI	5"	190.0	152.0	190
TU-74GI	5.1/4"	190.0	152.0	190
TU-75GI	5.3/8"	210.0	152.0	195
TU-76GI	5.5/8"	210.0	152.0	195
TU-77GI	5.3/4"	210.0	152.0	195
TU-78GI	6"	220.0	152.0	200
TU-79GI	6.1/8"	220.0	152.0	200
TU-80GI	6.1/4"	220.0	152.0	200

2.12" 63.5 mm
American inch sizes



PART NO.	ACROSS FLATS	DIA AT SOCKET END	DIA AT DRIVE END	OVERALL LENGTH
TUM-120HI	120	182.0	175.0	182
TUM-130HI	130	194.0	175.0	190
TUM-135HI	135	198.0	175.0	198
TUM-145HI	145	214.0	175.0	214
TUM-150HI	150	218.0	175.0	214
TUM-155HI	155	228.0	175.0	214
TUM-165HI	165	237.0	175.0	231
TUM-170HI	170	244.0	175.0	231
TUM-175HI	175	249.0	175.0	231
TUM-180HI	180	257.0	175.0	237
TUM-195HI	195	277.0	175.0	245
TUM-200HI	200	282.0	175.0	250
TUM-215HI	215	298.0	175.0	263
TUM-230HI	230	318.0	175.0	279
TUM-235HI	235	327.0	175.0	279

PART NO.	ACROSS FLATS	DIA AT SOCKET END	DIA AT DRIVE END	OVERALL LENGTH
TUM-71HI	4.5/8"	177.0	175.0	182
TUM-73HI	4.7/8"	187.0	175.0	190
TUM-76HI	5.1/4"	197.0	175.0	198
TUM-77HI	5.3/8"	203.0	175.0	198
TUM-78HI	5.5/8"	213.0	175.0	214
TUM-79HI	5.3/4"	213.0	175.0	214
TUM-80HI	6"	223.0	175.0	214
TUM-81HI	6.1/8"	227.0	175.0	214
TUM-83HI	6.1/2"	237.0	175.0	231
TUM-84HI	6.7/8"	249.0	175.0	231
TUM-84HI	7.1/4"	263.0	175.0	237
TUM-85HI	7.5/8"	277.0	175.0	245
TUM-86HI	8"	287.0	175.0	263
TUM-87HI	8.3/8"	297.0	175.0	263
TUM-89HI	9.1/8"	322.0	175.0	279

3.1/2" 88.9 mm
Metric mm sizes

3.1/2" 88.9 mm
American inch sizes

• TULEX SPECIAL IMPACT APPLICATION SOCKETS AND ACCESSORIES :



Tulex offers a range of special sockets. We may have what you need as a non catalogue item or our experienced staff of tooling experts can designed and produce application specific fastener tools to suit your extract needs. Given below are some illustrations of special sockets manufactured by us.

• Thin Walled Impact Sockets :

Tulex Thin Walled Impact Sockets are used at places of inaccessibility where there are restrictions due to the diameter at the nose end of the socket. In this case the diameter of the nose end is reduced. 12 point Thin Walled Sockets are available on request. Thin Walled Impact Sockets are manufactured in 3/8" (10mm), 1/2" (12.5mm), 3/4" (20mm) and 1" (25.4mm) square drives. Thin walled deep hexagon sockets are also available on request.

• Surface Drive Impact Sockets :

Tulex Surface Drive Sockets are designed for use on single or multiple spindle power tools (Non Impact Type). Specially relieved corners at the hex opening provides a floating action thus permitting the socket to engage the nut on the surface of the flat hex rather than on the corners. The large openings on six corners of the opening create a floating action that allows the socket to slip quickly and easily on to the nut or bolt. These are ideal for compensating for imperfect alignment between the tool and the fastener. These are generally recommended for impact usage. This type of a free corner profile distributes the surface loads and relieves the possible stress areas. The torque transmitting capability is increased and the high stress concentrating points are completely eliminated increasing the impact resistance of the fastener.

• Flank Drive Impact Hex Sockets (6 Flank points) :

Tules Flank Drive Socket can also be called a fast lead socket. These are basically designed for use with power tools and multiple spindle power tools. A slight recess is provided on the 6 corner points of the hex, which provides a speedy complete engagement with the nut almost instantly. This speeds productivity and extends tool life. Engagement is possible without starting and stopping the tool for each nut.

• Fixed Magnetic Sockets and Spring Loaded Magnetic Power Sockets :

Tulex Magnetic sockets holds the fastener in the driving position even when working straight down. Time wasting motions are eliminated when working in hard to reach areas.

Magnetic Spring Loaded Sockets also known as Bolt Clearance Sockets allows the bolt or stud to retract into the socket body due to the spring loaded or hollow cylinder magnet as the nut is run down.

• # 5, Spline Drive Impact Sockets :

These sockets are available from 19mm across flat to 80 mm across flat and 3/4" across flat to 4" across flat and 21 mm across flat to 52 mm across flat and 3/4" across flat to 2.11/16". The outside diameter at the socket end consists of a hex across flat portion and the outside diameter on the drives end consists of splines. These are available in standard and deep lengths.

• 1/4" (6.35mm) Male Hex Shank Extension Bars :

This type of special Extension Bar has on one end Male Square and on the other end male 1/4" Hex Shank. These are available in 1/4" and 3/8" Square Drives with overall lengths ranging from 50 mm to 150 mm. It is provided with a locking arrangement on the male square drive.

• TULEX AUTO REWIND AIR HOSE REEL :

ADVANTAGES

- Can be fixed OR suspended.
- Very little effort required for pulling.
- PU hose gets wound on drum preventing damage.
- Quickens operation as compared to straight length tubings.

APPLICATIONS

- Automobile shop floors.
- Garages, Petrol Pumps for cleaning and air filling.
- Also can be used in assembly lines of 2 wheelers, cars, HCV, LCV engine assembly lines.
- 2-Wheeler Service stations.

Note : These are available in 4.5 metres, 8 metres and 10 metres hose lengths.

